



M8U XL: Readme

universal MIDI Port driver for Windows 7, Windows 8.1, Windows 10

version: 1.3 | date: 2019-08-21 | filename: ESI_MIDIPort-v1_3.zip | product: M8U XL

ESI MIDI Port driver

The ESI MIDI Port driver supports the following products:

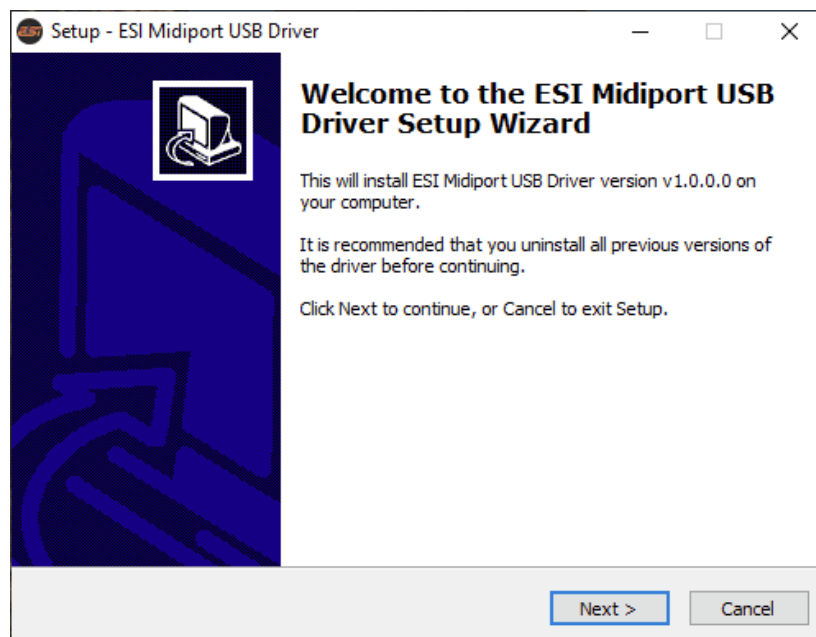
- M4U, M4U XL, M4U XT, M4U eX
- M8U, M8U XL, M8U eX
- MIDIMATE II, MIDIMATE eX
- RoMIO II (Rev. B)
- KeyControl 25, KeyControl 25 XL, KeyControl 25 XT (from v1.10)
- KeyControl 49+, KeyControl 49 XT (from v1.10)
- KeyControl 61 XT (from v1.10)

Please note that this **optional** driver works only with 32-bit and 64-bit versions of Windows 7, Windows 8, Windows 8.1 and Windows 10. Older versions of Windows are not supported.

After the installation of the driver, the products listed above will not use the generic driver that is included with Windows, but the ESI MIDI Port driver. This makes it more convenient to use multiple decodes at the same time and all the devices are accessible via the multiclient support in multiple applications at the same time.

Installation

Make sure that you have downloaded and unzipped the driver file. To start the installation, launch the setup program, which is an .exe file that is inside the driver download, by double clicking on it. Typically the filename is something like *ESIMidiport_vX.YY_setup.exe* where X.YY is the version number of the driver. When launching the installer, Windows might display a security message. Make sure to allow the installation. After that, the following dialog will appear:

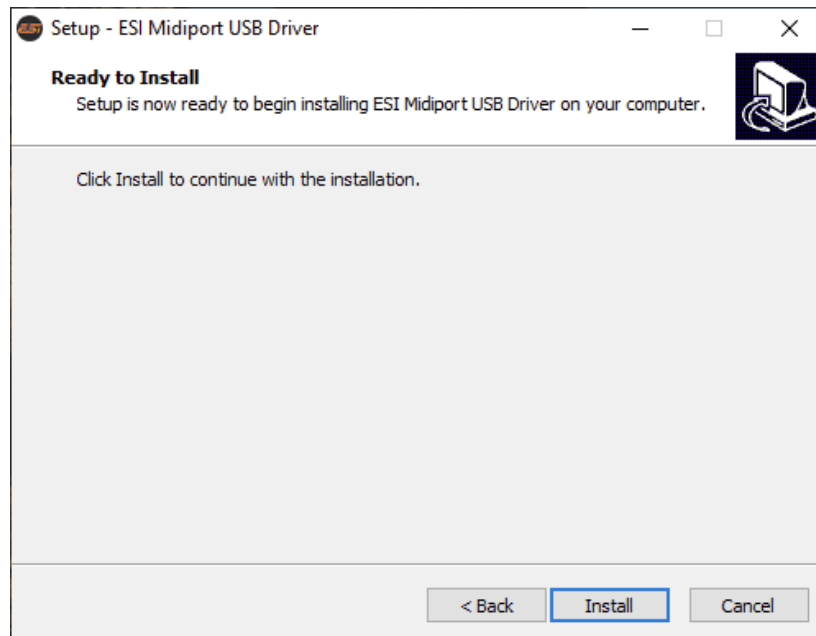


Click *Next* and then the following dialog will appear:

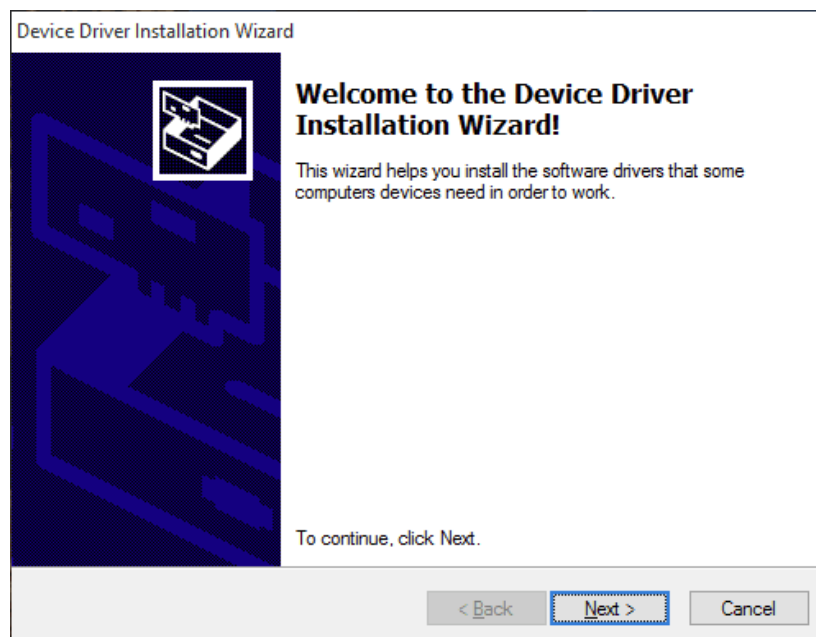
M8U XL: Readme

universal MIDI Port driver for Windows 7, Windows 8.1, Windows 10

version: 1.3 | date: 2019-08-21 | filename: ESI_MIDIPort-v1_3.zip | product: M8U XL



Now click *Install*. Files are now being copied. After some time an additional dialog will appear:

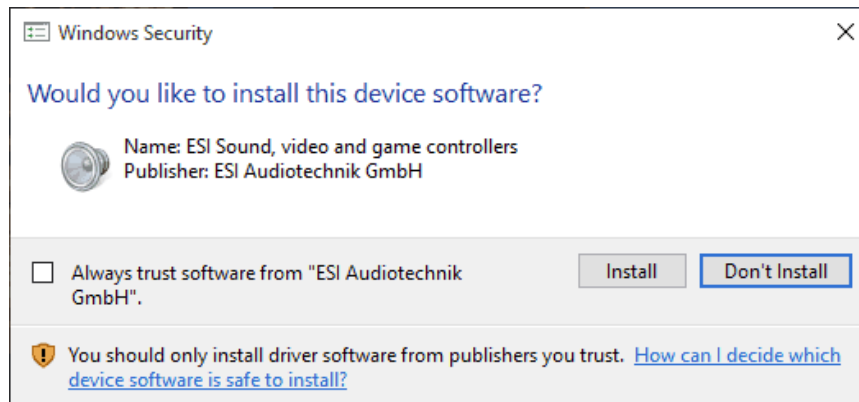


Confirm this by clicking *Next*. Again some files are being copied and typically you will be prompted with a *Windows Security* message like this:

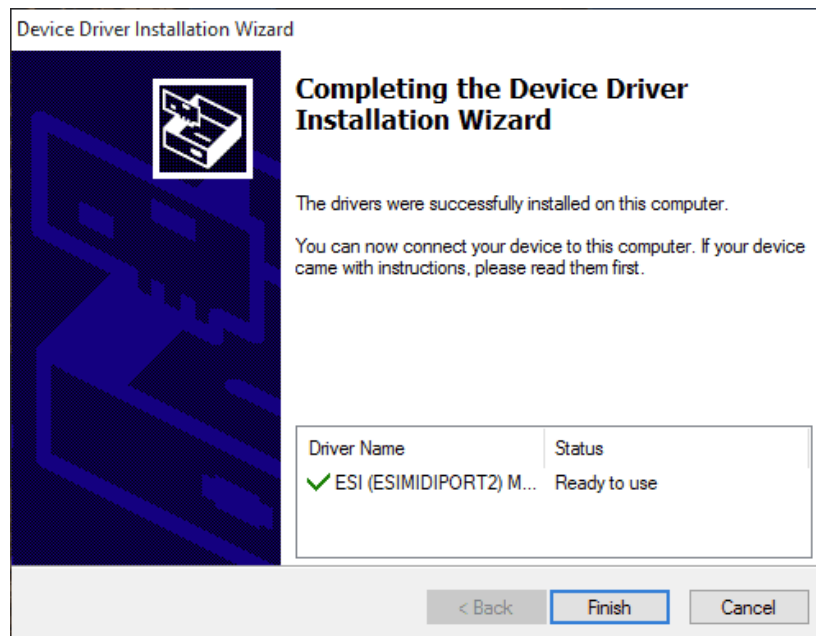
M8U XL: Readme

universal MIDI Port driver for Windows 7, Windows 8.1, Windows 10

version: 1.3 | date: 2019-08-21 | filename: ESI_MIDIPort-v1_3.zip | product: M8U XL



Confirm it by clicking *Install*. After a while the installation then will be completed and the following dialog will appear:

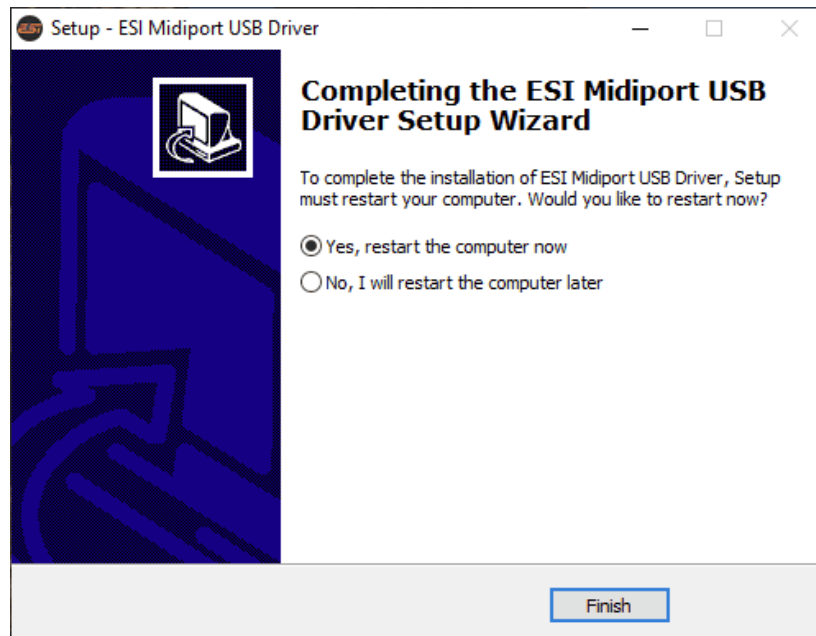


Once you see this, click *Finish*. On some systems it might be good to reboot the computer manually now, which can be done with the following dialog:

M8U XL: Readme

universal MIDI Port driver for Windows 7, Windows 8.1, Windows 10

version: 1.3 | date: 2019-08-21 | filename: ESI_MIDIPort-v1_3.zip | product: M8U XL



After the reboot, you can connect and start using your MIDI device with the ESI MIDI Port driver. If you use multiple devices, they will all be usable at the same time.

Uninstallation

In case you need to uninstall the driver at a later time, you will find it under the list of installed *Programs* in Windows *Control Panel*. You can simply remove it there. Even after the driver has been removed, you can use your ESI MIDI devices via the generic driver that is included within Windows.